

Technical Description

Model: R 470LA6x4MSZ Euro 3 CR19



Weights

Front	5642
Rear	3577
Total	9219

Chassis type

Chassis, Suspension and Cab type

Product class	Truck
Chassis adaptation	Articulated
Type of transport	Haulage
Wheel configuration	6x4
Chassis adapt. + wheel config.	A6X4
Truck model	R

Chassis dimensions

Chassis height	Semihigh (S)
Chassis width	2600 mm
Axle distance	3100 mm

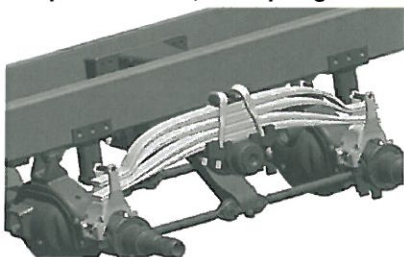
Load and suspension

Front

Axle weight front,technical	8000 kg
Suspension front, leaf springs	3x29, Parabolic
Suspension system front(price)	Leaf

Rear

Leaf suspension bogie type	2-spring
Suspension rear, leaf springs	2x38 + 2x45, Progressive parabolic



Suspension system rear (price)	Leaf
Bogie weight, technical	19000 kg (9500 + 9500)
Gross train weight, technical	> 65000 kg
Techn. gross veh.weight (GVW)	27000 kg
GTW Technical (kg)	78000 kg

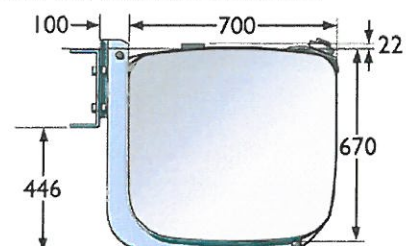
Legal weights

GTW Legal	56000 kg
Legal GVW	25700 kg
Legal weight front axle	7700 kg
Legal weight 1st rear axle	9000 kg
Legal weight 2nd rear axle	9000 kg

Fuel tanks

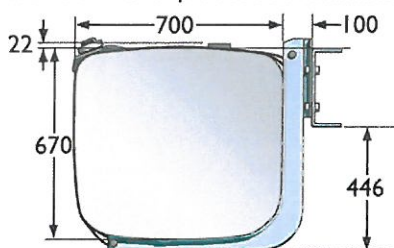
General

Fuel tank, left hand side	470W aluminium
470 litre W tank of aluminium.	



View from front, W tank.

Fuel tank, right hand side	470W aluminium
470 litre W tank produced in aluminium.	



W Tank position RHS

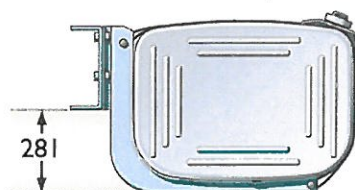
View from front, W tank.



Fuel tank mounting (price)	Double tanks
Fuel tank location	Normal

Normal tank position. The centre of the tank is located 7.5 mm above the lower edge of the frame.

This option determines the vertical position of the tank.
The choice of location depends on the choice of chassis height.



Normal fuel tank location.

Additional fuel tank equipment

Fuel filler cap	Lockable
Fuel filler cap lockable	2 Pieces

Wheel equipment

Rims

Rim, material disc wheel	Aluminium
Rim quantity front axle(s)	2
Rim type size material front axle(s)	11.75-22.5 disc aluminium
Rim quantity rear axle	4
Rim type size material rear axle	9.00-22.5 disc aluminium
Rim quantity spare	1
Rim spare	9.00-22.5 disc aluminium

Additional wheel equipment

Wheel nut cover (price)	Stainless 1 axle
Hose for tyre inflation	20 meter
Wheel, type	Disc
Jack	With

Tyres

Tyre type front axle	385/65R22.5 Long haul Steer Goodyear
Tyre type rear axle	315/80R22.5 Long haul Drive Goodyear
Tyre type tandem/tag/steer	315/80R22.5 Long haul Drive Goodyear

Brake system

Service brake

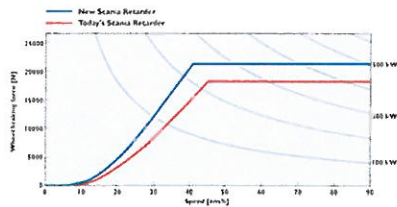
APS Air Processing System	Air management
Brake control	Pneumatic
Wheel brake	Drum
ABS, Anti-lock brakes	With
Traction control	With
Slack adjuster	Automatic
Brake shoe width 10" rear axle	With

Parking and emergency brake

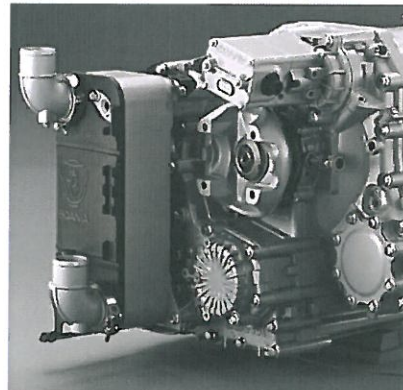
Brake chamber type 1st front	Membrane + spring
Brake chamber type, 2nd rear	Membrane
Parking brake valve	With check position

Auxiliary brakes

Exhaust brake control	Manual and automatic
Retarder	Scania



Improved performance characteristics for the Scania Retarder.



The retarder oil cooler is mounted directly onto the retarder.

Trailer brakes

Trailer brake coupling	With
Trailer hand control valve	With
Stop light trailer brake	With
Trailer brake connection	Type BSI

Additional brake equipment

Brake control combination	Pneumatic
----------------------------------	-----------

Electrics

Battery	180 Ah
Battery master switch	Service
Battery position	Left hand side
Battery master switch manoeuvring	Double acting left side frame
Alternator charge	100 A
Alternator temp compensation	With

Air inlet / outlet

Exhaust

Exhaust outlet, direction	Right hand
Exhaust silencer execution	Cube
Exhaust silencer heat cover	Normal

Air Intake

Air intake	Rear high
Aircleaner safety filter	With

Additional chassis equipment

-

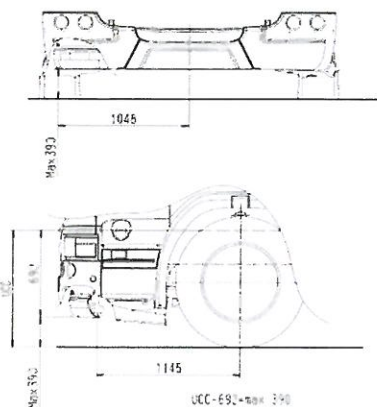
Boarding step to chassis LH	Single
Registrat plate hold rear type	Panel

Mudguards

Mudguard extensioner	With
Front mudguard, execution	In two pieces
Splash guard, front	With
Spray-suppress. acc 91/226/EEC	Without

Bumper

Bumper position	Low
-----------------	-----



Low-mounted bumper on G/R-cab.

Tractor adaptation

-

Fifth wheel bracket	With flange holes
Mounting plate	40 mm, D-value max 152kN
Fifth wheel category	Fixed, plate-mounted
Fifth wheel	JOST JSK37C-Z 185
Fifth wheel position	350 mm
Fifth wheel lighting	White light
Trailer electric coil cable	7 pole to 7 pole
Catwalk	Double

Rigid adaptation

-

Trailer electric connector	1x7 pole (24N) ISO 1185
-----------------------------------	-------------------------

Power train

Engine

Engine stroke volume	12 litres
Engine type, vehicle	DT12 06 470 hp Euro-3
Diesel engine, six-cylinder in-line	
Cubic capacity: 11.7 dm ³	
Max. output at 1900 rpm: 470 hp (345 kW)	
Max. torque at 1050-1350 rpm: 2200 Nm	
Injection system: Unit injector HPI	
Emission level: Euro 3	



Engine diagram for DT12 06.



D9 engine.



SCANIA

Turbocharger duty class	Special
Emission level	Euro 3
Injection system	Unit injector HPI
Fan, gear ratio	1:1
Fan control	Electronic
Crankcase ventilation, type	Open
Ecocruise	With
Ecocruise max speed	85km/h
Speed limiter	With
Speed limitation	85 km/h (EU)
White smoke limiter	With
Engine PTO preparation (price)	D12 without price
Fuel	Diesel
Coolant	Freezing point -25 degrees C

Gearbox

Gearbox type	Mechanical with overdrive
Gearbox	GRSO905R
Opticruise	With
Oil cooling for gearbox	With

Clutch

Clutch system	Automatic
----------------------	-----------

PTO (Power take-off)

EG-power take off	With
PTO EG rear	EG653P

Rear axle gear

Axle gear	RB662
Rear axle gear ratio	3,80
Differential lock	With

Cab

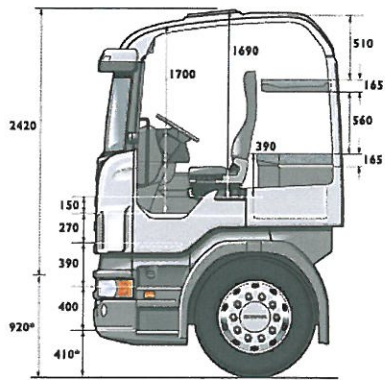
Cab type

Cab type	CR19
-----------------	------

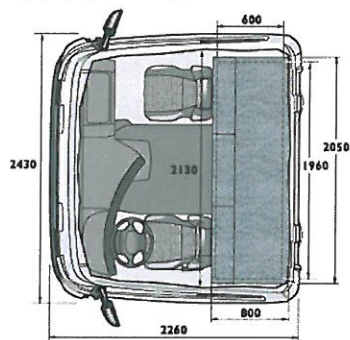
Long, high sleeper cab with normal roof height and a bed. Two beds as an option. Spacious cab with low flat floor that allows full freedom of movement in the cab and 170 cm standing height in the centre of the cab. Wide and practical boarding step units make it easy to enter and exit the cab.



SCANIA



* Can vary depending on type class and chassis height



R-series sleeper cab with normal roof height.

Cab exterior equipment

Roof height

Normal

Suspension

Cab suspension

4-point air sprung

Cab anti-roll bar

Comfort

Windows and mirrors

Window, rear wall

Without

Windscreen

Tinted

Door window

Single glazing

Window winder door

Electrical driver+pass.side

Mirror type

With air deflector

Rear view mirror type driver

Spherical

Rear view mirror, passenger

Spherical

Rear view mirrors, heated

With

Wide angle mirror

Passenger side

Close up mirror

With

Electric mirror adjustment

Passenger side

El. window winder (price)

Driver+passenger side 14/19 cab

Illumination

Headlamp type	H4
Headlamp levelling	With
Headlamp asymmetry	Left hand
Daytime running light	With
End outline marker lamp	White
Beacon	Prepared
Spot lamp in bumper	With

Storages

External storage compartment	Driver+passenger side
------------------------------	-----------------------

Colours and stripes

Chassis colour	Sub grey
Chassis colour (price)	Standard
Finish, chassis	Normal
Cab colour category	Category 0
Cab colour	White Ivory
Grille colour	Silver brilliant
Contrast tapes door/sidewall	With

Additional exterior equipment

Reverse alarm	With
Signal horn	Compressed air
Horn, compressed air	With
Roof hatch	Manual
Side air deflector length	51 cm
Roof air deflector height	27 cm
Air defl., delivery procedure	Mounted
Air deflector elongation	With
Roof rail	With

Cab interior equipment

Seats and bunks

Driver seat	Medium
Adjustable shock absorber driver	With
Upholstery seat driver	Woven
Passenger seat	Medium
Upholstery seat passenger	Woven
Warning signal uncon.seat belt	Lamp and audio signals
Bed upper	Width 600mm
Lower bed	With carrier mat. plastic
Bed lower overall width	800mm, fixed
Lower bed mattress	With

Interior materials

Instrument panel finish	Soft
Instr panel decorative strip	Dark chrome
Instrument panel colour	Brown/grey
Underskirt instr panel colour	Grey
Steering wheel type	Basic
Wall panel/headlining material	Textile
Door panel	Plastic
Protective mats floor	Rubber
Mat centre floor	Rubber

Curtains

Curtain door & windscreen	With
Curtain for bed	With

Climate system

Climate system control	Automatic
Air conditioning	With
Defrosting fan rpm	ACC controlle

Instrument and controls

Instrument cluster	Basic, km/h
--------------------	-------------



Instrument cluster, Basic, km/h

Air pressure display	Bar
Tachograph	1 day with record sheet, SVDO
Number of keys/remotes	Two
Adjustable steering wheel	With
Cruise control switches	Steering wheel
12V socket in dashboard	With

Communications

Radio	Preparation (12V)
Mobile telephone preparation	With
Frequency remote lock	433 MHz

Storages

Rear wall storage	Storage drawer
Storage bins doors	With bottle holder

Additional interior equipment

Instrument panel	Long curved
Instrument panel passenger side	With lid
Reading lamp lower bed	Right+left side
Interior lighting	Basic
Interior door sunvisor	Driver side
Sunvisor door driver side	Foldable
Central locking and alarm	Remote locking
Central locking (price)	Remot 14/16/19
Bed safety net	With
Rescue equip. except fire ext.	With
Fire extinguisher	1 x 2 kg
Tool kit	With

Delivery

Type plate

Transport application	General cargo, haulage
GTW actual	56-60 tons
Plate language	English

Operators manual

Operator's manual language	English
----------------------------	---------